

# FlygtCloud Web-based Pump Control

MORE THAN 150,000 MUNICIPAL PUMPS STATIONS USE FLYGT CONTROLLERS

**FlygtCloud enables you to connect to a new or existing Flygt pump station and carry out many of the functions of traditional telemetry without any of the risks - and for a much lower cost.**

Hardware is installed in the panel with either the MultiSmart Pump Station Manager, MT2PC or Flygt APP Family of pump controllers. FlygtCloud equipment connects via a serial or Ethernet connection and sends regular status and alarm information to a Flygt managed web server via a cellular data network.

**The web server stores all your information in a secure database and carries out 2 key functions:**

1. Sends specific alarm notification via SMS, email or voice to each user on the alarm list.
2. Generates web pages enabling customers to log in and view the status of their whole network, see the detailed status of all pump stations, change individual pump status (hand/off/auto) and to clear alarms.

You can check well levels, view fault status, reset pumps and alarms, and view historical data.

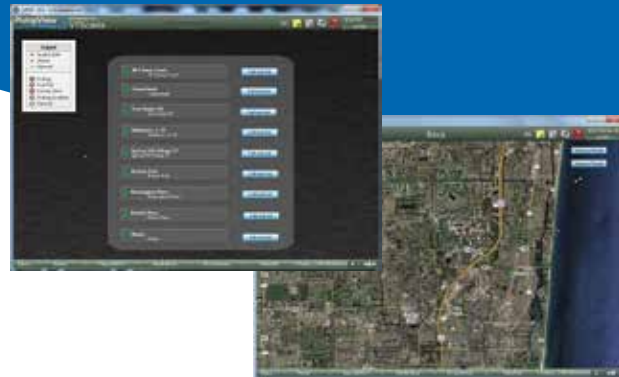
For more details on all of the functionality of the web server please refer to the technical specifications.

## **Site visits cost time and money**

Traditional pump station control and monitoring is expensive and time-consuming. When something goes wrong, someone has to visit the site, identify the problem and fix it. Ignored too long, a pump problem can mushroom into an environmental nightmare.

## **More than 150,000 municipal pumps stations use Flygt Controllers**

Working with water and sewerage authorities, Flygt has addressed many monitoring and control issues with a range of pump controllers designed to sense problems, identify them and, in many cases, correct them without a site visit.



## **FlygtCloud - Your 3-Step Solution**

When a problem occurs, 3 things must happen: 1. You need to know about it. 2. You need to identify the problem. 3. You need to fix it. FlygtCloud addresses all of these things, and more:

### **1. Alarm!**

Immediately when a problem occurs, FlygtCloud sends a specific alarm notification via mobile phone, SMS messaging or e-mail to each user on the Alarm List in turn, until the alarm is acknowledged via web site access or SMS.

### **2. What's the problem?**

FlygtCloud generates web pages so you can view the entire network's status. Alarms are highlighted, making it easy to check pump station levels, which pumps are down, which pumps are still available, etc. in moments, enabling you to quickly diagnose the cause of the problem.

### **3. How do I fix it?**

With FlygtCloud, you have many of the functions of traditional telemetry at your fingertips. Quickly and easily clear alarms, reset pumps or change individual pump status from auto to hand or off.

In addition, the system is being expanded to deliver a broader range of historical data that can forewarn of impending problems with pump motors, electrical supply or blockages and serve as the basis for a proactive maintenance program.



# FlygtCloud Web-based Pump Control

Flygt's pump controllers were designed to meet the specific needs of municipal authorities. They are simple, user-friendly modules with a range of measurement and control factors that allow supervisors and engineers to monitor just about every aspect of pump activity.

## Powerful, Yet Simple

Besides direct operational benefits, Flygt also eliminates the technological hassles of running your own system. Many cities do not have the resources required to continually update software, train personnel and write programming code.

FlygtCloud takes care of all of that for you! There's no software to install. There's no server to maintain. There's no programming to do. Flygt runs the server system that collects, analyzes and presents all your pump station network data on private and secure web pages. We'll take care of your monitoring and database functions, leaving you free to address other issues. When you're ready for it, your information is there - whatever you want - whenever you want it - from wherever you are.

## Monitoring Fee vs. Capital Investment

Why spend your capital investment on a SCADA system, investing your valuable budget dollars on expensive servers, software, upgrade, training, documentation, and support.

Flygt is ready, willing and able to provide you with a simple and secure option - all for a minimal monthly fee.

## Benefits of Outsourcing

Outsourcing noncore business processes has become standard practice for governments, utilities and corporations worldwide. Benefits include cost savings, improved quality of data, complete network knowledge, reduced site injury, increased energy consumption - not to mention the benefits of Flygt's 100+ years of industry experience!



## Security and Privacy

VPNs protect data traffic over the internet, and SSL security on the web browser ensures that no one can view the web pages you see. Nobody has access to your data unless you allow it. Data is stored on secure servers available only via password.

## 24/7 Monitoring

Our servers are secure, backed-up and hosted by one of the most secure web hosting facilities in the world. The data center has technical and security staff on site 24/7. Each element of the system is backed-up from internet connections to power systems. Server management and data transmission costs are all included in your monitoring fee.

## FlygtCloud Reports

FlygtCloud administrative users receive daily reports emailed in .csv format including:

- Hours Run & Starts Accumulators
- Fault Report - date/time stamp, fault active/inactive, pump station
- Alarm Log - all user alarm interaction including when each user was notified, by what method (email/SMS/voice), who noted the alarm
- User Interaction Log - all user interaction with their remote sites

**xylem**  
Let's Solve Water

Xylem, Inc.  
14125 South Bridge Circle  
Charlotte, NC 28273  
Tel 704.409.9700  
Fax 704.295.9080  
855-XYL-H201 (855-995-4261)

We're a global team unified in a common purpose: creating advanced technology solutions to the world's water challenges. Developing new technologies that will improve the way water is used, conserved, and re-used in the future is central to our work. Our products and services move, treat, analyze, monitor and return water to the environment, in public utility, industrial, residential and commercial building services, and agricultural settings. With its October 2016 acquisition of Sensus, Xylem added smart metering, network technologies and advanced data analytics for water, gas and electric utilities to its portfolio of solutions. In more than 150 countries, we have strong, long-standing relationships with customers who know us for our powerful combination of leading product brands and applications expertise with a strong focus on developing comprehensive, sustainable solutions.

For more information on how Xylem can help you, go to [www.flygt.com](http://www.flygt.com)