

Flygt A-C Series NS Pumps

NSW MODEL 100 & 150 HORIZONTAL NON-CLOG WASTEWATER PUMPS

Single stage - enclosed non-clog type impeller for pumping wastewater and other non-corrosive liquids with soft solids.

NSW pumps are designed to handle wastewater and other non-corrosive liquids with soft solids in suspension. Typical applications are municipal water and wastewater, industrial wastewater treatment and food processing.

With thousands of NS dry pit pumps in operation worldwide and as the industry leader in service and support with the over 120 years of expertise, we've got the flexibility to design to your needs. If it can be done, we will do it.

NSW Model 100 & 150 designs offer outstanding advantages:

Standardized design – Maximum interchangeability of parts helps reduce spare parts inventory. All parts except the casing suction cover and impeller are completely interchangeable within a given frame group. Eighteen pump sizes are built on only five power frames.

Tapered shaft – The impeller end of the shaft and the impeller bore are designed with a taper for reliability and ease of maintenance.

Impeller nut – A contoured stainless steel nut is provided to prevent material from hanging up. The nut is secured by a stainless steel set screw.

Rear pull-out design – The complete rotating element can be removed from the pump without disturbing the suction or discharge piping. Fewer crafts are required to service the pump.

Flexibility – Either clockwise or counterclockwise rotation can be supplied. Discharge nozzle can be arranged in any one of five positions for either rotation to suit the piping arrangement.

Engineered for dependability – Two vane non-clog impellers with smooth water passages capable of passing soft solids without clogging.

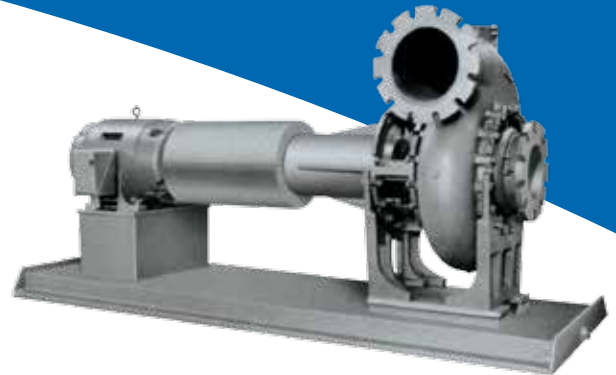
Maximum shaft and bearing life – Large diameter shafts minimize deflection and increase packing life. Bearings are selected in accordance with the Anti-Friction Bearing Manufacturers Association (AFBMA) to provide for maximum life expectancy.

Simple impeller adjustment – Axial clearance between the impeller and suction cover is controlled by adding or removing shims between the outboard bearing cartridge and the frame.

Coupling guards – Enclosed type which meets ANSI B-15.1 specification.

Stuffing box design – A universal type stuffing box is provided that will accept either packing or mechanical seal.

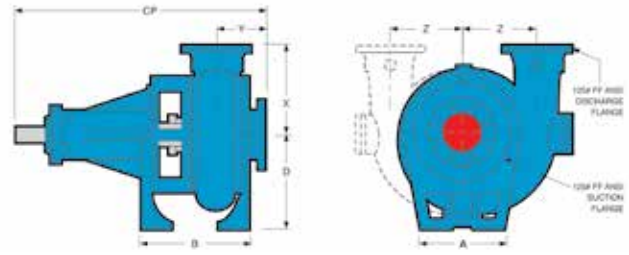
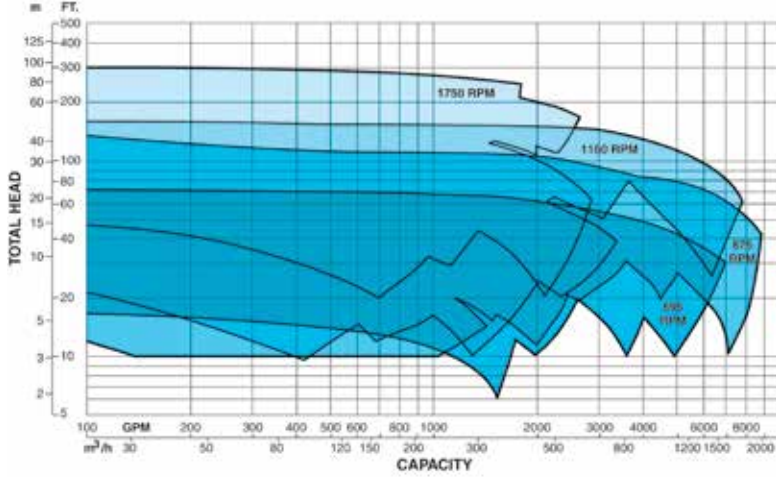
Wear plate – A 410 stainless steel (hardened) suction cover wear plate is standard.



NSW Model 100 - Bare pump
NSW Model 150 - Pump base and coupling

Flygt A-C Series NSW MODEL 100 & 150 HORIZONTAL NON-CLOG WASTEWATER PUMPS

NSW Model 100 & 150 range chart



FB084 • Flygt NSW 100-150 Flyer • 06/2013 • US

DIMENSIONS

Pump Size	Suction	Discharge	A	B	D	X	Y	Z	CP	Weight
4X4X10 SC	4	4	12.0	13.7	12.5	9.0	5.8	7.3	27.1	400
4X4X10 LC	4	4	12.0	14.6	12.5	10.0	3.3	7.9	28.0	425
4X4X12 LC	4	4	12.0	14.6	12.5	12.0	6.3	9.0	28.0	580
5X5X12	5	5	12.0	14.7	12.5	13.0	7.3	9.5	29.1	670
6X6X12 SC	6	6	12.0	14.7	12.5	13.0	7.3	9.5	29.1	680
6X6X12 LC	6	6	12.0	16.8	15.5	13.0	7.3	9.5	30.3	700
6X4X14 LC	6	4	16.0	16.8	17.0	14.8	7.8	10.4	37.0	700
6X4X14 CV	6	4	16.0	16.8	17.0	14.8	7.8	10.4	37.0	700
6X6X14	6	6	16.0	17.7	17.0	17.0	8.8	12.2	38.1	860
8X8X14	8	8	16.0	17.7	17.0	18.0	9.1	18.0	38.9	1060
5X5X17	5	5	16.0	20.8	19.0	16.0	8.0	11.5	41.4	936
6X6X17	6	6	16.0	20.8	19.0	17.0	8.4	12.2	41.8	1004
8X8X17 SC	8	8	16.0	22.0	19.0	18.0	9.1	18.0	43.1	1125
8X8X17 LC	8	8	16.0	22.0	19.0	18.0	9.1	18.0	43.1	1150
8X8X21	8	8	20.0	24.4	25.5	21.0	10.5	18.8	57.8	2400
10X10X21 SC	10	10	20.0	25.4	25.5	24.0	11.0	17.9	58.8	2460
10X10X21 LC	10	10	20.0	25.4	25.5	24.0	11.0	17.9	58.8	2560
12X12X21	12	12	20.0	25.4	25.5	24.0	12.8	18.4	60.5	2930

All dimensions are in inches. These dimensions should not be used for construction or installation purposes. Pumps are available as right hand (CW) or left hand (CCW) rotation with different discharge positions.



Flygt is a brand of Xylem, whose 12,000 employees are addressing the most complex issues in the global water market.

www.xylem.com

Xylem Water Solutions U.S.A., Inc.
 N27 W23293 Roundy Drive
 Pewaukee, WI 53072 U.S.A.
 Phone: 262-548-8181
 e-mail: flygtac@xylem.com