



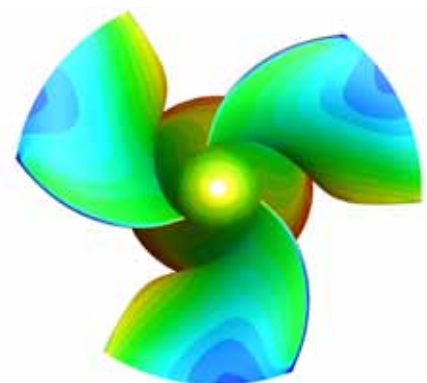
# Streamlined for the ultimate in performance

Flygt slimline propeller pumps are designed to transport large volumes of water at low heads with the ultimate in performance. The slimline profile combined with N-technology brings the advantage of small pump station size as well as sustained high efficiency.

- Slim design
- N-technology
- Small station footprint
- Quick and easy installation
- Self-cleaning
- Sustained high efficiency

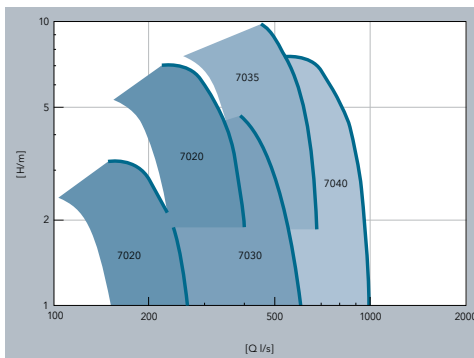
All of our pumps are tested and approved in accordance with national and international standards.

The new slimline propeller pump series includes models: PL7020, PL7030, PL7035 & PL7040.



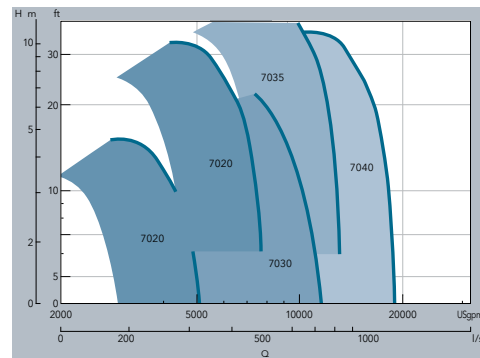
An optimized pressure distribution ensures high efficiency of the propeller and suppresses flow separation losses due to the flow path curvature in the guide vane passage. The pressure profiles are also enhanced to achieve high efficiency and good cavitation performance. Superior clog resistance is achieved by proven N-technology with backswept leading edges and a relief groove.

**7020-7040 50Hz**

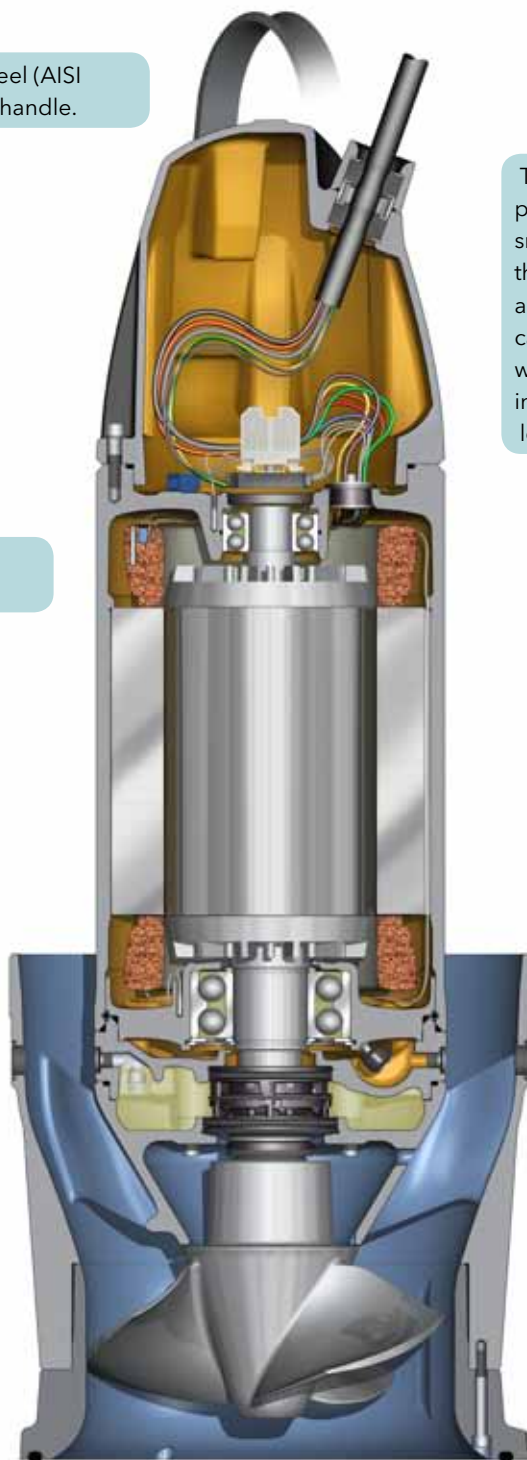


50Hz performance

**7020-7040 60Hz**



60Hz performance



Stainless steel (AISI 316) lifting handle.

The newly designed pump top gives a smooth area transition at the outlet of the pump and keeps the power cable more aligned with the flow. This helps in minimizing friction losses.

Class H motor insulation with embedded thermal sensors.

Large inspection chamber with leakage sensor minimizes the risk for bearing and stator failure.

The guide vanes are designed with an optimal area distribution to give low losses in the guide vane passage itself and an even velocity distribution without dead zones. This even velocity distribution is essential to reduce mixing losses due to the area expansion after the drive unit. Guide vanes are self-cleaning due to the leading edge sweep design in combination with a radius increase.

The Flygt Plug-in™ seal with the Active Seal™ system offers increased sealing reliability, reducing the risk of bearing and stator failure.

N-technology, hard iron bell mouth with integrated wear ring function and relief groove, increases the liquid velocity with minimum losses.

N-technology, stainless steel (AISI 316) propeller enables excellent self-cleaning, corrosion and wear resistance.

Model	Power 50Hz	Power 60Hz	Column pipe diameter (ID)
PL 7020	6 to 25 kW	27 to 40hp	400mm/16"
PL 7030	16 to 33 kW	26 to 65hp	500mm/20"
PL 7035	60 to 80 kW	90 to 165hp	550mm/22"
PL 7040	20 to 80 kW	80 to 155hp	600mm/24"